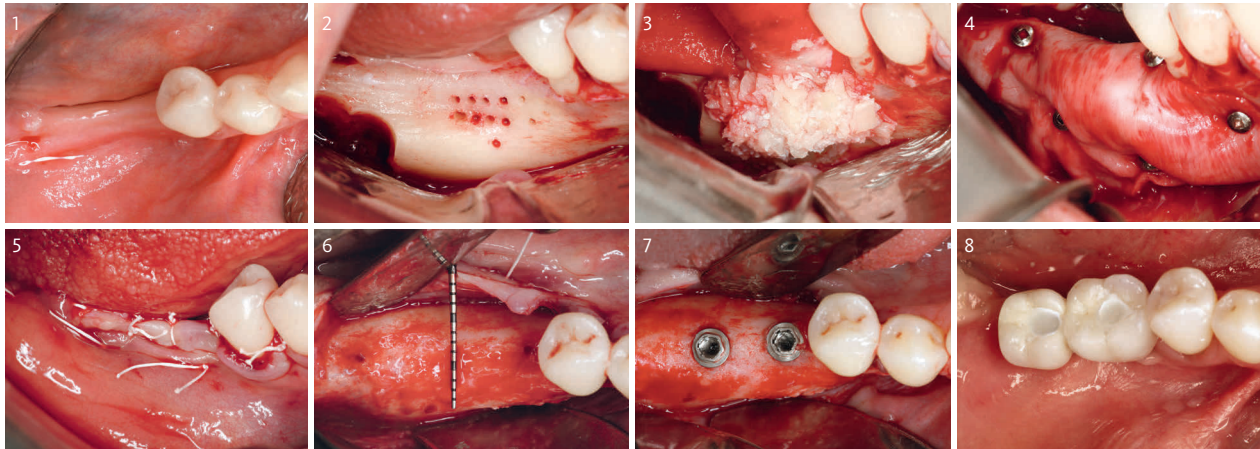


Horizontal Ridge Augmentation Combining a 1:1 Ratio of Geistlich Bio-Oss® and Particulated Autogenous Bone with Geistlich Bio-Gide®

Prof. Dr. István Urbán (Budapest, Hungary)



Objective

- Predictably develop optimal bone width for dental implant placement with a technique which has minimal morbidity and increased patient satisfaction

Learn more about the clinical benefits of combining autogenous bone with Geistlich Bio-Oss® and/or Geistlich Bio-Oss® Collagen...

[CLICK HERE](#)

- 1 Occlusal view of severely atrophied posterior mandibular ridge
- 2 The recipient bone bed is prepared with multiple decortication holes and autogenous bone is harvested from the external oblique ridge
- 3 Application of a 1:1 mixture of autogenous particulated bone and Geistlich Bio-Oss® granules
- 4 Geistlich Bio-Gide® membrane fixed with titanium pins. The pins are 1mm in diameter, which are stabilized in the cortical bone of the mandible
- 5 A periosteal releasing incision is made connecting the two vertical incisions until enough elasticity is achieved. The flap is then sutured in two layers
- 6 Occlusal view of the newly formed ridge at re-entry after 7 months
- 7 Two implants were placed with good primary stability. Note the excellent incorporation of the Geistlich Bio-Oss® with the autograft
- 8 Final outcome 2 years after implant loading

The Ideal Geistlich Products for Regenerative Procedures Utilizing Autogenous Bone

When used in combination, these proven and reliable products provide a foundation for long-term clinical success in regenerative dentistry.



For more information and complete warnings and indications contact Customer Care Toll-free 855-799-5500 or visit: www.geistlich-na.com