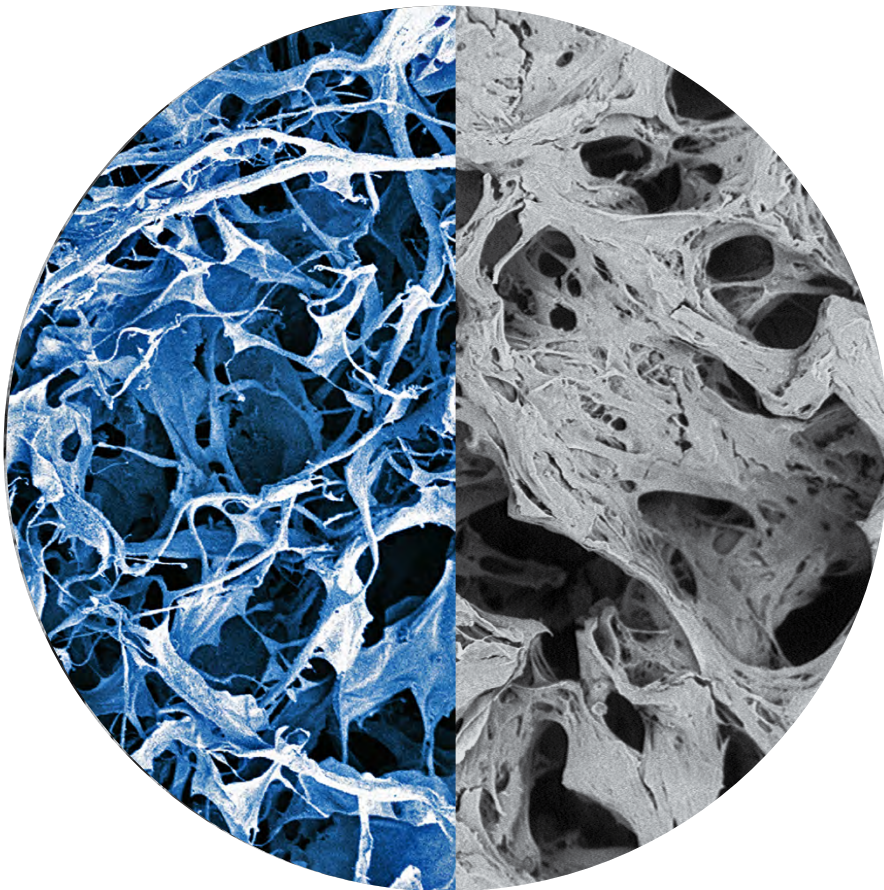


How can you  
simply expand  
your soft-tissue  
treatment options?



Exactly.

# Geistlich Mucograft®



## Available sizes

- > 15x20 mm
- > 20x30 mm
- > Geistlich Mucograft® Seal, 8 mm



## Studies

Geistlich Mucograft® has been clinically evaluated for augmentation of keratinized mucosa:

- > Around natural teeth<sup>1,2</sup>
  - > Around implants or fixed prosthetic restorations<sup>3,4</sup>
  - > Prior to implant placement<sup>5</sup>
  - > In vestibuloplasties with long-term follow-up<sup>6,7</sup>
  - > As a socket seal after ridge preservation<sup>8</sup>
- In open-healing situations, Geistlich Mucograft® is a predictable alternative to free gingival grafts.<sup>2,3,4,6</sup>

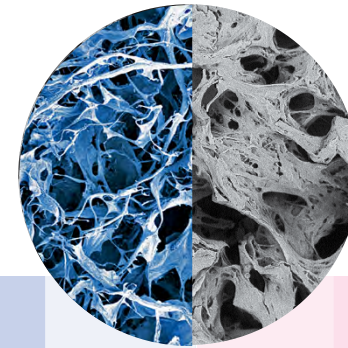
Geistlich Mucograft® has also been clinically evaluated for recession defects:

- > In single sites with a coronally advanced flap<sup>9-12</sup>
- > In multiple sites with a coronally advanced flap<sup>13-17</sup>



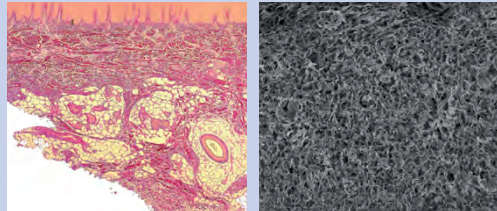
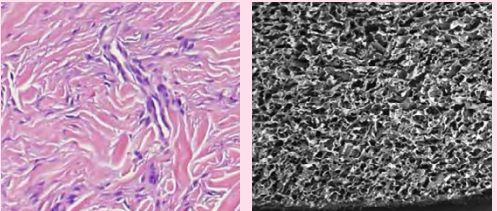
When used in a submerged situation Geistlich Mucograft® is a predictable alternative to connective tissue grafts.<sup>10,13</sup>

To meet your demands for additional soft-tissue treatment options, Geistlich's dedicated team of collagen experts went to work to develop solutions. The result is a choice – Geistlich Fibro-Gide® and Geistlich Mucograft® each offer unique benefits, allowing you to select the right matrix for your specific clinical needs.

## The Ideal Matrix for the Gain of Keratinized Tissue



## The Right Solution for Volume Stability

		
Compact and spongy layer	<b>Structure</b>	Porous layer
Reconstituted collagen – no cross-linking	<b>Cross-linking</b>	Reconstituted collagen – smart cross-linking
Reduced volume stability	<b>Stability</b>	Good volume stability
Open and submerged healing	<b>Healing</b>	Submerged healing
<ul style="list-style-type: none"> <li>• Gain of keratinized tissue</li> <li>• Socket Seal</li> <li>• Vestibuloplasty</li> <li>• Recession Coverage</li> </ul>	<b>Indications</b>	<ul style="list-style-type: none"> <li>• Soft-tissue volume augmentation around implants and natural teeth, and under pontics</li> <li>• Recession Coverage</li> </ul>
<b>FGG Vs. Geistlich Mucograft®</b> 		<b>CTG Vs. Geistlich Fibro-Gide®</b> 

Courtesy of Dr. D. Thoma. Geistlich Pharma AG, Wolhusen, Switzerland.

University of Zurich, Switzerland.

# Geistlich Fibro-Gide®



## Available sizes

- > 15x20x6 mm
- > 20x40x6 mm **Coming Soon**



## Studies

Clinical studies in the following indications have shown positive results:

- > Soft-tissue augmentation around implants after staged Guided Bone Regeneration<sup>1,2</sup>
- > Soft-tissue augmentation around implants in conjunction with Guided Bone Regeneration<sup>3</sup>

Geistlich Fibro-Gide® is a valuable alternative to autologous connective tissue grafts.<sup>1,2,4</sup>



EXACTLY  
like no other.

---

References Geistlich Mucograft®

- 1 McGuire MK, Scheyer ET: J Periodontol 2014; 85(10): 1333-41.
- 2 Nevins M, et al.: Int J Periodontics Restorative Dent 2011; 31(4): 367-73.
- 3 Lorenzo R, et al.: Clin Oral Implants Res 2012; 23(3): 316-24.
- 4 Sanz M, et al.: J Clin Periodontol 2009; 36(10): 868-76.
- 5 Urban IA, et al.: Int J Periodontics Restorative Dent 2015; 35(3): 345-53.
- 6 Schmitt CM, et al.: J Periodontol 2013; 84(7): 914-23.
- 7 Schmitt CM, et al.: Clin Oral Implants Res 2016; 27(11): e125-e133.
- 8 Jung RE, et al.: J Clin Periodontol 2013; 40(1): 90-98.
- 9 McGuire MK, Scheyer ET: J Periodontol 2016; 87:221-227.
- 10 Cardaropoli D, et al.: J Periodontol. 2012; 83(3):321-8.
- 11 Camelo M, et al.: Int J Periodontics Restorative Dent. 2012; 32(2):167-73.
- 12 Jepsen K, et al.: J Clin Periodontol. 2013; 40(1):82-9.
- 13 Rotundo R, et al.: Int J Periodontics Restorative Dent. 2012
- 14 Cardaropoli D, et al.: Int J Periodontics Restorative Dent. 2014; 34:s97-s102.
- 15 Schlee M, et al.: Int J Periodontics Restorative Dent. 2014; 34(6):817-23.
- 16 Molnár B, et al.: Quintessence Int. 2013; 44(1):17-24.
- 17 Aroca S, et al.: J Clin Periodontol. 2013; 40(7):713-20.

---

References Geistlich Fibro-Gide®

- 1 Instructions for Use. Geistlich Fibro-Gide®. Geistlich Pharma AG, Wolhusen, Switzerland.
- 2 Thoma DS, et al.: Clin Oral Implants Res. 2015 Mar;26(3):263-70.
- 3 Thoma DS, et al.: J Clin Periodontol. 2016 Oct;43(10):874-85.
- 4 Thoma DS, et al.: Clin Oral Impl Res. 2009; 20 (Suppl. 4): 146-65.
- 5 Zeltner M, et al.: J Clin Periodontol. 2017 Apr;44(4):446-453.
- 6 Chappius V, et al.: Int J Periodontics Restorative Dent 2018; 38: 575-582.

**CAUTION:** Federal law restricts these devices to sale by or on the order of a dentist or physician.

**Indications:**

Geistlich Fibro-Gide® is indicated for the following uses: Soft-tissue augmentation; localized gingival augmentation to increase keratinized tissue around teeth and implants; Alveolar ridge reconstruction for prosthetic treatment; and recession defects for root coverage.

Geistlich Mucograft® is indicated for the following uses: Covering of implants placed in immediate or delayed extraction sockets, localized gingival augmentation to increase keratinized tissue (KT) around teeth and implants, alveolar ridge reconstruction for prosthetic treatment, recession defects for root coverage.

**Warnings:**

As Geistlich Fibro-Gide® and Geistlich Mucograft® are collagen products, allergic reactions may not be totally excluded. Possible complications which may occur with any surgery include swelling at the surgical site, flap sloughing, bleeding, dehiscence, hematoma, increased sensitivity and pain, redness and local inflammation.

For more information on contraindications, precautions, and directions for use, please refer to the Geistlich Biomaterials Instructions for Use at: [www.geistlich-na.com/ifu](http://www.geistlich-na.com/ifu)

Geistlich Pharma North America, Inc.  
202 Carnegie Center  
Princeton, NJ 08540  
Customer Care Toll-free: 855-799-5500  
info@geistlich-na.com  
www.geistlich-na.com